

## CDI P/N: 173-2926K1

This replacement coil set fits P/N: 582926

**WARNING!** This product is designed to be installed by a professional marine mechanic. CDI Electronics cannot be held liable for injury or damage resulting from improper installation, abuse, neglect or misuse of this product.

### INSTALLATION

1. Remove the negative battery cable.
2. Remove the flywheel.
3. Disconnect the original stator wires from the power pack and rectifier.
4. Remove the stator plate assembly (mark the location of the plate in relation to the engine block for reassembly).
5. Remove the wire clamp bracket on the top of the stator plate. ( Fig. 1)
6. Remove the wire clamp bracket on the bottom of the stator plate. (Fig. 2)

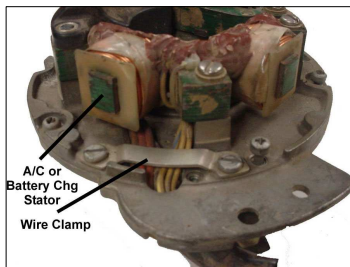


Fig. 1

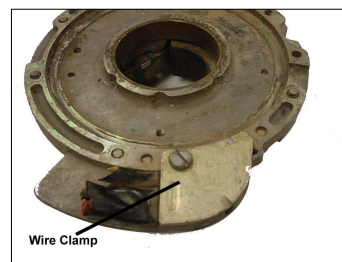


Fig. 2

7. Remove the battery charge frame from the stator plate and slide the wires back through the stator plate.
8. Mark the side of the battery charge stator frame on the side where the wires come out of the old coil.
9. In a well ventilated area, use a heat gun and heat the brown epoxy securing the old coils to the frame. (Fig. 3) Carefully pry the epoxy off until the coils are fully exposed. Cut the cable tie and the coil locks. (Fig. 4) Then carefully pry the old coils off of the frame.

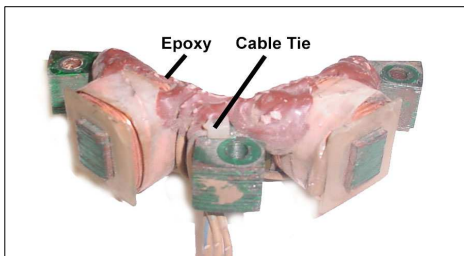


Fig. 3

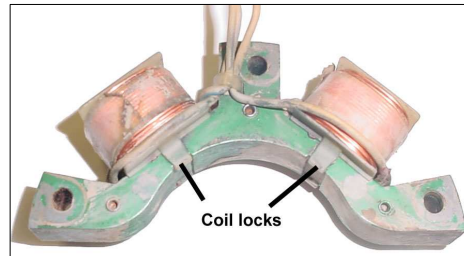


Fig. 4

10. Slide the new coils on the stator frame, making sure the wires come out on the correct side of the frame.
11. Bend the top up and the bottom frame laminations down to lock the coils on the frame. Secure the wires with a cable tie.
12. Route the wires through the stator plate and sleeving.
13. Using the 553-4994 Locator Ring and the original bolts, install the charge coil stator and the A/C or battery charge stator with a good thread-locker applied (CDI 989-3977 is recommended) to the bolts and tightened to the factory torque specifications.
14. Install the wire clamp bracket on the top of the stator plate.
15. Install the wire clamp bracket on the bottom of the stator plate.
16. Install the stator plate assembly (remember to align the mark on the plate to the mark on the engine block).
17. Connect the stator wires to the power pack and rectifier (the stripes on the original stator wires were for assembly benefit) and it does not matter which yellow stator wire is connected to which yellow rectifier wire).
18. Replace the flywheel according to the service manual.
19. Replace the battery cable.