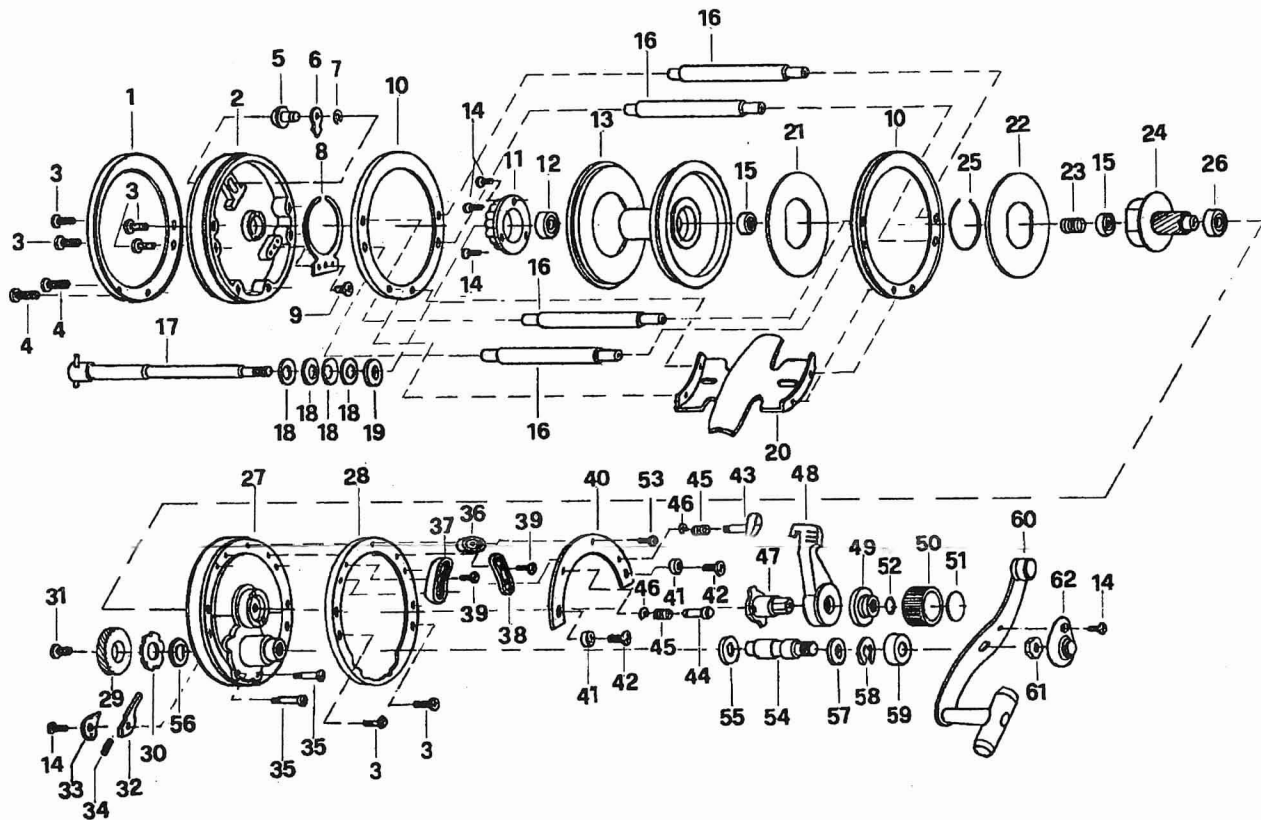


TROLLING REEL DIAGRAM



- | | | |
|-----------------------------|-------------------------------|-----------------------------|
| 1. Left Side Plate Cover | 22. D-D Washers | 43. Position Fixed Posts |
| 2. Left Side Plate Assembly | 23. Tension Spring | 44. Posts |
| 3. Body Screw | 24. Pinion Gear Assembly | 45. Spring |
| 4. Body Foot Screw | 25. "C" Clip Spring | 46. "E" Clip Washer |
| 5. Click Button | 26. Ball Bearings | 47. Drag Adjust Gear Sleeve |
| 6. Click Pawl | 27. Right Side Cover Assembly | 48. Drag Control Lever |
| 7. "E" Clip Washer | 28. Right Side Plate Cover | 49. Sleeve Washer |
| 8. Click Pawl Spring | 29. Drive Gear | 50. Disc Nut |
| 9. Click Pawl Spring Screw | 30. Ratchet | 51. PRE-SET Label |
| 10. Side Spool Cover | 31. Gear Shaft Screw | 52. "O" Ring |
| 11. Click Ratchet | 32. Anti-Reverse Pawl | 53. Screw |
| 12. Ball Bearings | 33. Right Side Cover Gear | 54. Gear Shaft |
| 13. Aluminum Spool | 34. Anti-Reverse Pawl Spring | 55. Drag Washer |
| 14. Screw | 35. Body Foot Screw | 56. Fibre Washer |
| 15. Ball Bearings | 36. Middle Pad | 57. Drag Disc Washer |
| 16. Body Posts | 37. Left Pad | 58. "E" Clip Washer |
| 17. Spool Posts | 38. Right Pad | 59. Drag Cover |
| 18. Spring Washers | 39. Pad Screw | 60. Handle Assembly |
| 19. Plain Washers | 40. Metal Plates Cover | 61. Handle Nut |
| 20. Body Foot | 41. Screw Washers | 62. Handle Nut Lock Cap |
| 21. Drag Disc Washers | 42. Body Screw | |